



2024-2025 Executive Board

President: Susan Absher

VP Publicity: Gail Cooper

VP Programs: Nancy Nordin

Treasurer: Diane DeVincent

Secretary: Lee Doyle

Past President: Linda Smith

Website:

www.themilfordgardenclub.org

Email:

mifordgardenclubmi@outlook.com



May the New Year bring warm sunny days to enjoy in the garden. No weeds, and beautiful blooms.



Milford Garden Club Established 1948

A member of the Michigan Division Woman's National Farm and Garden Association

January 2025 Newsletter



President's Report

Susan Absher

What began as my conception of a holiday party that would invoke pleasant memories of one's childhood during this magical time of year, it grew into a splendid event. Thank you to our Board, who under the guidance of Nancy Nordin, transformed the Senior Center into a festive banquet. Nancy admitted she had been "on this rodeo before," and her experience in hosting lavish parties in New York was evident on December 12.

A thank you to everyone who helped in making the party a success, from those who set up the tables to those who helped with the clean-up and everything in between. Hopefully, the centerpieces incited conversation of times past, and you learned something about the member who was willing to share part of their story.

The Sirens, an all-female band, delighted us to the sounds of Christmas and rock hits from decades ago. I appreciate Carol Hilf and Don Caley for encouraging them to be part of our annual celebration once again.

Karol LaHaie and Diane DeVincent have procured five properties for the 2025 Garden Walk. However, if a member is either willing to show their gardens or know of someone who has a garden willing to show, please contact one of them.

While many of you are heading for a warmer climate, some of the members will be filtering through the applications for teacher mini grants. Others will be coming up with ideas to assist the library with their "Gnomes and Fairies" activity that will take place in the fall.

Wherever you travel and whatever you do, I wish you Peace and Joy. See you in the Spring!

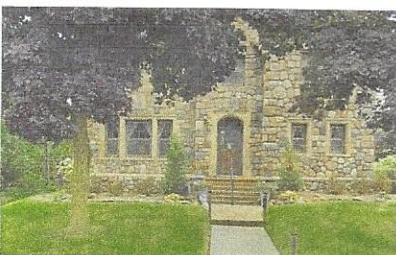
grow

2024 - 2025 Committees

- Arts & Craft Club: Isabel Davis
Community Outreach: Sue Grifor
Devine Raffle: Sheila Myers
Email Distribution: Lisa Willard
Facebook: Lisa Willard
Field Trip Coordinator: General Membership
Garden Walk: Diane DeVincent & Karol LaHaie

Garden Maintenance: Kathy Blackburn
Janet Kinney

Greeter: Millie Hulewicz
Historian: Anna VanHyfte
Holiday Party: Susan Absher & Nancy Nordin
Hospitality Coordinator: Beki Franchock
Membership: Terri Hardick
Mentoring: Diane Pearson
Name Tags: Diane Craft
Newsletter: Jackie Swenson
Plant Sale: Lisa Hill
Scholarship : Linda Sturgeon
Sunshine: Kathy Barker
Teacher Mini Grants: Linda Sturgeon
Tea Time Group: Barb Amey
Website: Sue Tompkins
Yearbook: Brook Qualman
WNF&GA (National): www.wnfga.org
WF&GA (Michigan Division): www.michdivwhfga.org



Christmas Donation

The Generous members of the Milford Garden Club donated \$371. to the Lee House.

Herbal Thyme

Happy New Year. Blessings to all in 2025. Remember no meeting in January and February. We start up again in March. Info coming in February newsletter.



Shelley Dale



Bobbi Kuschel

Patience is a lazy gardener's best friend

Mara Grey (1949-)



Tea Time

Nancy Nordin will host the gathering on January 22nd at Czapski's restaurant in Milford at noon. Mark your 2025 calendar now and come join the group and wind down after the busy holidays. You may call or text Nancy _____

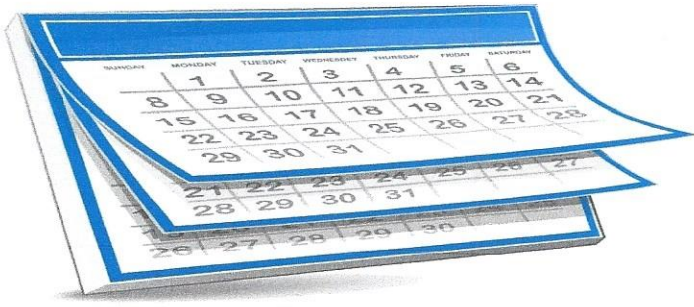


Nancy Nordin

Guy Time

We meet at the New Hudson Inn on Grand River just east of Milford Road, the fourth Wednesday of every month at noon. We cordially invite you to join us for a drink, a sandwich, and to help solve all the world's problems. Gardening? Sometimes. Questions? _____





Dates to Remember

2025

- January 22, Tea Time
- January 22, Guy Time
- January 29, February Newsletter Deadline
- February 17 Board Meeting
- March 13, General Membership Meeting
- March 17, Board Meeting
- March 18, Seed Library Kick off
- April 10, General Membership Meeting
- April 21, Board Meeting
- May 8, General Membership Meeting
- May 19, Board Meeting
- June 7, Plant Sale
- June 12, General Membership Meeting
- June 18, Garden Walk Preview & Potluck
- June 19, Rain Date for Garden Walk Preview
- June 16, Board Meeting
- June 20 & 21, Garden Walk
- July 10, General Membership Meeting
- July 21, Board Meeting
- June 20, Garden Walk
- July 10, General Membership Meeting
- July 21, Board Meeting
- September 11, General Membership Meeting
- September 25, Board Meeting
- October 9, General Membership Meeting

Along the Vine

If you have seen anything in your garden or when wandering that you think would delight other gardeners please send pictures and description to me at: jacquelyn.swenson@gmail.com

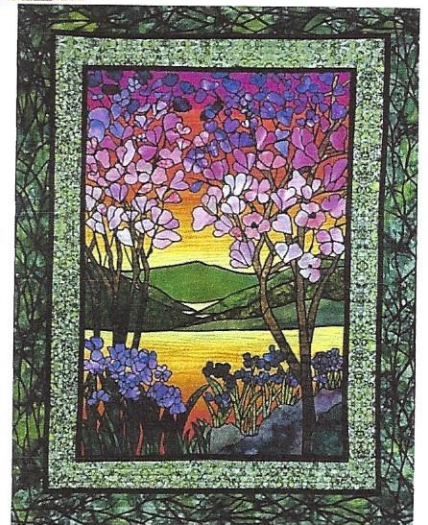
As I was out and about I found examples of how Plant/Garden lovers survive the winter!

Two days in a row I parked next to cars that had these crocheted planters hanging in them. I decided that was a sign that I needed to share these unique car planters!



At the grocery store I struck up a conversation with a gentleman who was buying potted herbs to plant window sill herb planters with his grandchildren. What a great idea!

AND as a quilter seeing this quilt in a newsletter reminded me that for some creating beauty with fabric is a favorite winter pass time. What do you do when you can't be working in the garden?



Around Town And Beyond



House Plant Hoopla Weekend
January 25, 12 - 1 pm House Plants
101 - Pruning and Propagation
Free RSVP

January 25, 1 - 2 pm Terrarium Workshop \$35. RSVP

January 26, 11:30 am - 12:30 pm Houseplants 201 -
Transplanting and Repotting

Register at: www.englishgardens.com



goldner walsh
GARDEN & HOME

January 4, 10- 11 am Epiphyte
Mounting Learn to mount and
care for an orchid or staghorn
Fern \$40.

January 11, 10 - am Carnivorous
Bog Garden Workshop \$35.

January 18, 10 am Succulent Garden Workshop \$35.

January 25, 10 - 11 am Topicals 101 \$15.

Register @ 248-332-6430



Jan 10, 2 pm, March
8 2 pm, March 19 6
pm Macramé Hang-
ing Planter \$50

January 15, 7 pm

Moss Pole Workshop \$45.

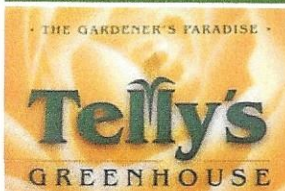
January 17 2 pm Fairy Garden Planter Workshop
\$35.

January 18 1 pm House Plant swap Free

January 22 7 pm Succulent Planter Workshop \$35.

February 1 2 pm Introduction to Vegetable Gar-
dening Class \$10.00

For more information call 248-437-7219



January 4, 11, 18 & 25 @ 1 pm
Bonsai Workshops \$50.

Register at 248-689-8735

MSU Extension News

January 6, 6-7:15 pm online Plantquest Four part series on
the quest for iron-clad plant combinations, conifers that
pack a punch, ways to landscape with native plants and gor-
geous botanical gardens.

January 17 or January 24, 1-5pm Online pruning Workshop
for Smart Gardeners

msue.news@msue.msu.edu



Join us for Maple Fest 2025, an exciting celebration of Michi-
gan's sweetest winter crop - maple syrup! Discover the fasci-
nating journey of how sap transforms into syrup as we guide
you through the tapping process. First identify a healthy sugar
maple tree, typically with a trunk diameter of at least 10 inches,
with the right temperatures - days above freezing and nights
below—sap begins to flow.

Experience the traditional method of tapping by drilling a
small hole and inserting a spile, allowing the sweet sap to drip
into buckets. Afterward, take a tour of our historic sugar
shack to see the boiling process and the tools used in this age-
old craft. Enjoy hands on activities like wagon rides and sam-
pling fresh maple sap, syrup and sugar.

Come hungry for our 'all you can eat' pancake celebration in
the beautiful 19th century barn, where you can indulge in pan-
cakes, sausage, and of course pure maple syrup!



HAPPY BIRTHDAY
MICHIGAN !

January 25, 10:30 am - 12
pm Independence Oaks
9501 Sashabaw Road, Clarkston, MI Did you know that the
state of Michigan's birthday is Jan 26? Join us for a birthday
celebration featuring Michigan History, fun facts and a
Michigan-themed craft. This program is suitable for all
ages. \$5. per person Preregistration with payment required
248-858-0916 weekdays or 248-625-6473 during nature cen-
ter hours