



April 2024 Newsletter

2023-2024 Executive Board

President: Susan Absher

VP Publicity: Gail Cooper

VP Programs: Nancy Nordin

Treasurer: Diane DeVincent

Secretary: Lee Doyle

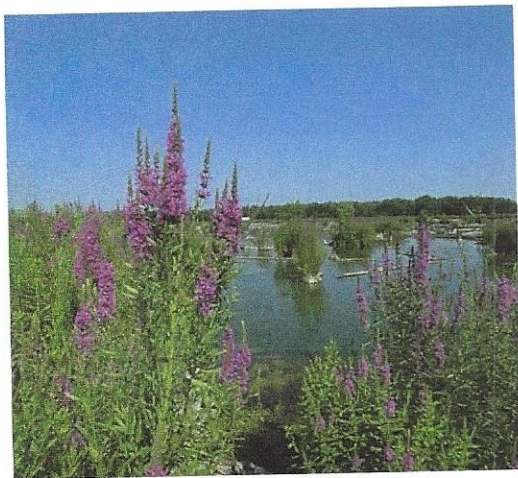
Past President: Linda Smith

Website:

www.themilfordgardenclub.org

Email:

mifordgardenclub@outlook.com



April Meeting

When: Thursday April 11, @ 6:30 for social 1/2 hour, 7:00 pm meeting

Where: Milford Senior Center
1050 Atlantic, Milford, MI

Speaker: Emily Duthinth

Program: Invasive Species

Milford Garden Club Established 1948

A member of the Michigan Division Woman's National Farm and Garden Association



President's Report

Susan Absher

Please note that at the April General Meeting we will be voting on Article VII: Dues, Section III of our By-laws. If you have a strong opinion on the matter, you should come and vote.

On March 20, I attended a President's Meeting in Lapeer hosted by Sue Malone, our Division President. Branches spoke of their fundraisers: Lapeer's "Mrs. Tebbin's Tea", Saginaw's "Books in Bloom", and Warren and Clarkston's "Rummage Sale." Membership dues range from \$19 all the way to \$100. \$500 mini grants are given to teachers to institute environmental projects. Some of the branches hand out \$500 scholarships, while others award thousands. An interesting fact from Bloomfield was that they do no planting whatsoever, while most said they plant flowers somewhere in their community, generally around government buildings. The other branches were impressed with our Pictorial Directory, Welcome Packet and Brochure from The Milford Garden Club.

Anna Van Hyfte, our historian, has asked me to repeat in our Newsletters and at our General Meetings the need to provide her with any documents you may have in your possession that need to be scanned for preservation. This includes minutes from Board and General Meetings, Newsletters, Treasury Reports, Brochures from Garden Walks, Plant Sale Flyers, and so on. If you have something you want to keep, she will get your personal property back to you.

Please keep in mind the Membership voted to bring their own beverage container to the meetings. It was important to us to protect our environment by not contributing to the senseless waste of plastic and paper in our landfills.

If for any reason, you are unable to drive to the General Membership meetings, please contact me to help you find a ride. Everyone is essential to the success of this organization, and I don't want the lack of transportation to hinder you from attending.

Lastly, this is more of a personal nature. I, like many of you, are getting to the point where we are trying to clear out our households so that our family members aren't left with such an arduous task. For 20 years or so, I used my creative

Continued on page 2

energy to make one-of-a-kind pieces of jewelry. In April, before our meeting begins, I'm going to have many of my pieces for sale at ridiculous prices. I know you won't like everything, but I'm hoping something appeals to you for yourself or as a gift for someone. The money from the sale will go to the Lee House as a donation from The Milford Garden Club. I don't want any of the sales nor do I want my name associated with the donation to the Lee House. I simply don't have the heart to put it in a Salvation Army Bin. I would rather let you have than take it to a resale shop as well. The Lee House was so appreciative of the large donation they received, they wrote to tell us of the garden they were planning. Perhaps this additional money will allow them to improve on their garden. Below is a sampling of what will be available.



It's that time again —

Dues are \$30.00 for an individual or \$40.00 for a couple. Please make checks payable to Milford Garden Club. I will be at the April Meeting so you can pay your dues then or mail them to _____



Hospitality



Calling all cooks and bakers!

We are looking for two more members to bring treats to the meeting on April 11.

Please let Mike and Cindy Bauman know



Cindy Bauman

if you can bring something to share, and if you would like to make a sweet or savory. Thank you!



Jackie Swenson

From the Editor

We need your help! To address your gardening needs and interests please send me any plant or garden topics or questions you would like to see covered in the newsletter. Thank you to everyone who sent news items and articles for this months newsletter. The deadline for the May newsletter is April 25. Please send your contributions to: _____

Herbal Thyme

It's April and soon time for our Herbal Thyme meeting. The date is April 8th at 1:00pm at Milford Public Library (community room).



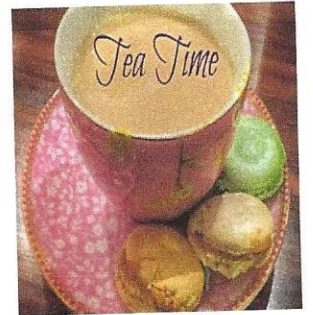
The herb study is LEMON BALM. Such a fragrant herb to grow and cook with. We are allowed food and drinks in this meeting room, so bring a recipe you would like to share. Bring any information on LEMON BALM or come to learn. Everyone is welcome. Just drop in. Looking forward to seeing you...

Herbally yours, Shelley Dale



Tea Time

The regularly scheduled day for Tea Time is Wednesday April 24. For more information please contact _____



Guy Time

We meet at the New Hudson Inn on Grand River just east of Milford Road, the fourth Wednesday of every month at noon. We cordially invite you to join us for a drink, a sandwich, and to help solve all the world's problems. Gardening? Sometimes. Questions? _____



Around Town and Beyond

MICHIGAN STATE
UNIVERSITY

MSU Extension



Dates to Remember

- April 11, General Membership Meeting
- April 15, Board Meeting
- April 17, Daffodil Luncheon
- April 25, May Newsletter Deadline
- May 7, Clean up of Arthurs Park & Senior Center
- May 8, Rain Day for Clean up
- May 9, General Membership Meeting
- May 16 - 19, WNFGA National Meeting, Hershey, PA
- May 20, Board Meeting
- May 22, Spring Council Meeting @ the Saginaw Art Museum
- June 1, Annual Plant Sale
- June 13, General Membership Meeting
- June 17, Board Meeting
- June 21 & 22, Annual Garden Walk

World-renown garden plantsman, Adrian Bloom, talks about his favorite plants and design combinations. *Foggy*



Bottom—A garden to Share Saturday, April 13 at 11:am \$18.95.
For more information see Kerry's website:
pyours1@gmail.com

Tollgate Night Hikes April 19 @8pm Cost \$12. Call 248-347-3860

Tollgate Spring Plant Sale Saturday June 1, 9am to 2pm
28115 Meadowbrook Road Novi, MI

3 in-person hands on workshops on pruning
April 12, 3: -5: pm County Farm Park, 2230 Platt Rd, Ann Arbor
April 13, 10:am—12: pm MSU Tollgate, 28115 Meadowbrook Rd., Novi
April 13, 2: - 4: pm MSU Tollgate, 28115 Meadowbrook Rd., Novi

April 6 New Perennials for 2024 \$10.00
Plant your best Vegetable Class
April 11 \$10.00



Dahlia Tuber Potting Workshop April 13. \$20.00
Salad School & Workshop April 18. \$10.00
Planting an Herbal Container Garden April 20. \$40.00
New Annuals For 2024 April 25 \$10.
Creating Captivating Containers April 27th \$10.00
For more Information Call Telly's 248-689-8735



Garden Party Weekend
April 6 & 7 All locations 9:00 am—6pm
Earth Day celebrate at English Gardens



Garden of Cocktails April 26, @ 7pm \$45.
For more details and to register go to:
goldnerwalsh.com



Black Sheep Weavers Spring Fiber & Flowers Sale April 13, 9-4pm April 14, 11-3pm
Container Gardening Workshop April 20, @11am & April 21 @ 1 pm
Open Planting April 27, & 28 11-3 pm



Native Plant Sale

JUNE 1
10 AM-4 PM
Neiman's Parking Lot
7121 Dixie, Clarkston

SALUEHERONHEADWATERS.ORG

More than 100 species for sale!

Sale benefits the Blue Heron Headwaters Conservancy

grow

2023 - 2024 Committees

Community Outreach: Sue Grifor

Devine Raffle: Sheila Myers

Email Distribution: Lisa Willard

Facebook: Lisa Willard

Field Trip Coordinator: Lisa Hill

Linda Becker

Garden Walk: Diane DeVincent & Karol LaHaie

Garden Maintenance: Kathy Blackburn

Janet Kinney

Greeter: Barb Brennan

Historian: Anna VanHyfte

Holiday Party: Carol Hilf

Don Caley

Hospitality Coordinator: Mike & Cindy Bauman

Membership: Terri Hardick

Mentoring: Diane Pearson

Name Tags: Marion & Dale Benedict

Newsletter: Jackie Swenson

Plant Sale: Lisa Hill

Scholarship: Linda Sturgeon

Sunshine: Kathy Barker

Tea Time Group: Mary McFarland

Website: Sue Tompkins

Yearbook: Brook Qualman

WNF&GA (National): www.wnfga.org

WF&GA (Michigan Division): www.michdivwhfga.org



We are so glad you have joined the Garden Club

Debbie & Hal Johnson

Michele Peltier

Along the Vine

If you have seen anything in your garden or when wandering that you think would delight other gardeners please send pictures and description to me at: Jacquelyn.swenson@gmail.com



About a month ago English Gardens advertised stems for sale. I bought bundles of red twig dogwood, yellow twig dogwood and pussy willow. I brought them home and cut the stems at an angle and put them in water in my kitchen window - and waited. WOW they

started growing leaves! Then they started growing roots!! Once the weather worms up just a bit I'll plant them in the yard and see if I can keep them growing.

Signs of spring are popping up all over



Spring Clean Up

Spring Clean up of Arthur's Park and Senior center May 7, 9 am. Rain date is May 8, 9 am.

Thank you to everyone who signed up at the March meeting. We do need more volunteers. Please contact me if you can help.



Kathy Blackburn

Thank you!

Garden Club Afternoon Tea--A Success

Milford Garden Club kicked off its initial Afternoon Tea on a sunny, but cold, Thursday, March 28, 2024. There was a good turnout of 12 members and one new prospective member. The tea was held at Diane Pearson's home with a wide selection of finger foods--savories, scones, yummy desserts and, of course, a variety of tea. Some members brought their own teacups and shared stories of how the teacups came into their possession. The date for the next Afternoon Tea has not yet been scheduled, so keep an eye out in a future newsletter for the next one.

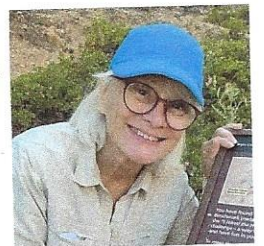
We now have three different formats of Tea Time—potluck lunch at a member's home, lunch at a restaurant of the hostess's choosing, or Afternoon Tea at a member's home. Please join us next time for good food and enjoyable conversation.



Photos: Diane Pearson



Have you seen the *GardenFit* television series? Garden fit offers a much needed perspective: Taking care of your Body while Taking Care of your Garden. Expert gardener Madeline Hooper hosts the series along with her fitness trainer, where they visit a variety of gardeners and farmers across America. Each gardener has a unique creative vision & gardening technique to share, along with the ailments that accompany gardening and their lifestyle. Madeline's trainer uses a sensible approach to tackle these aches and pains by developing practical habits in the garden to allow for more ease, comfort and freedom of movement in their gardens and beyond. Each episode has a festive ending in which local culture, special interests, or the latest bloom in their garden are celebrated. All episodes of Season 1 are available to watch for free on the PBS website. Season 2 premieres on March 18. Check it out @ <https://pbs.org/show/gardenfit/> Season 11, Episode 1 is at Carp Lake MI (Bonnie's daughter worked on the production.)



Bonnie Lynch

Member Spotlight

Hello everyone! I'm Isabel, the one who brought the painted gourds to the last meeting. Let me tell you a little bit about myself, where I come from, and what I'm doing.

Growing up in Mexico City, I was surrounded by a delightful contrast. My incredibly creative mom, an elementary teacher, filled our house with art supplies, while my father, a life coach, instilled the power of chasing dreams. My childhood was a blend of city adventures and serene escapes tending to my grandmothers' gardens in the countryside, fostering a deep appreciation for both nature and creativity.

This love for creation continued through after-school art workshops at 16, fueling my passion for crafting and connecting. Moving to the US in 2002, raising two wonderful kids, and hosting elaborate, hands-on birthday parties for them rekindled the joy of those creative childhood years.

During the pandemic, it was nurturing my own gardens that gave me peace and fulfillment. A spark ignited when my brother sent a picture of his daughters wearing marigold crowns, made by their own little hands - a project I had to recreate! This led me to discover Susan McLeary, a talented Michigan floral artist and teacher, whose artistic approach resonated deeply. Her book's opening line, "In floristry, like in life, create what you crave to see," mirrored my father's philosophy perfectly.

Inspired by Susan and the potential I saw, 2023 became a year of exploration and learning. I tested my skills and the land's potential, and the results exceeded expectations! Terraces Flower Farm started to get its shape. I wanted to design a place for creative exploration, human connection, a therapeutic natural place to relax and recharge.

Just as the season ended, another wonderful surprise arrived. Susan Absher visited my gardens and invited me to participate in the annual garden walk, followed by an invitation to join the Milford Garden Club, which was a honor to accept.



Isabel Davis

Do Your Boxwoods Look Sick? How To Diagnose the Problem

As spring begins here in Michigan, we start noticing damage in our yards. One of the most planted shrubs in Michigan is the Boxwood and there is a lot of Boxwood damage in many places. But, if you have Boxwoods and they are looking like they did battle with Mother Nature, check first to see what's wrong. It may be the notorious Boxwood blight or something less sinister.

Boxwood blight was first detected in Michigan in 2018. Its symptoms are similar to other boxwood diseases, insect feeding damage and environmental disorders, such as drought, freeze or wind injury, nutrient deficiency or incorrect care.

Boxwood blight is primarily spread by moving contaminated plant materials, such as fallen, infected leaves, container-grown boxwood or boxwood greens used for holiday decoration. Bad news—the blight can live in plant debris on the soil's surface or below the soil for up to FIVE YEARS! Even more troubling is boxwood blight spores are also spread by animals, splashing water (sprinklers), on pruning tools, clothing, equipment and anything else that might have come into contact with the infected plants, and you could be totally unaware of it.

How To Identify Boxwood Blight

There are three key symptoms that indicate the presence of boxwood blight. If you learn the combination, it will dramatically improve your chances of identifying the disease. Generally, these signs show up in late spring or early summer.

1. Defoliation

Boxwood blight causes rapid leaf drop on infected shrubs, resulting in bare twigs and piles of yellow to green leaves on the ground. Other boxwood diseases, not blight, leave dry, straw-colored leaves that remain attached to dead branches.



Photo: The Ohio State University

2. Cankers

Boxwood blight causes canker, which is a localized dead area on stems. Cankers are discolored, oozing, or sunken.



Photo: Bartlett Tree Research Laboratories

3. Leaf spots

A third clue that your shrub has boxwood blight is evidence of greasy and water-soaked leaves prior to falling, or there may be circular spots, usually with a dark ring and orange halo.

The dropping leaves of blight may harbor the unsuspecting killer. That's because the fungus produces thousands of tiny structures (*microsclerotia*) in each infected leaf. These microsclerotia remain in leaf litter and soil of the affected plants, so they can overwinter to attack year after year. Even if you removed diseased boxwoods, the microsclerotia germinate again to cause new infections in any remaining shrubs!



Photo: Bartlett Tree Research Laboratories

Other Plants That Have Boxwood Blight

Pachysandra (*Pachysandra terminalis*), a common groundcover plant, is also host to boxwood blight. On Pachysandra, the disease doesn't usually cause defoliation or death of the pachysandra, but it can infect boxwoods.

Can you get rid of boxwood blight?

There are no treatments to cure boxwood blight. You can only control it by removing diseased plants.

Control Boxwood Blight

Below are suggestions to help your boxwoods fight the blight.

- Regularly check boxwoods and pachysandra for the disease.
- Avoid overhead watering; use drip irrigation or water plants at the roots.
- Prune plants when conditions are dry and sanitize pruning equipment between plants or sections of plants. Rake and remove leaf debris.
- **DO NOT** use boxwood holiday decorations near your outdoor boxwoods.

Based on the three clues of blight, you confirm whether boxwood blight is present, then remove and destroy all infected plants and any plant debris by double bagging the diseased material and disposing of it in a landfill or burning it.

Less Susceptible Boxwood Varieties

There isn't any species of boxwood that is completely resistant to infection. Some varieties do show some resistance. However, these varieties can still hide the pathogen, so that nearby, less resistant plants may succumb.

Zone 5 boxwoods less resistant to blight:	
B. sp. Handsworthii'	B. sp. 'Wintergreen'
B. sp. Henry Shaw'	B. sp. 'Franklin's Gem'
B. sp. 'North Star'	B. sp. 'Northern Emerald'
B. sp 'Vardar Valley'	B. sp. 'Longwood'

Boxwood Blight Look-Alikes

There are other conditions that may look like blight but aren't! One major difference between boxwood blight and its look-alikes is defoliation. Boxwood blight causes extensive defoliation, while other problems have leaves that turn tan to brown, but don't drop off the shrub. Fortunately, these look-alikes cause relatively minor injury. Boxwoods can be "cured" by pruning the damage during a dry period in the spring. Common look-alikes include:

- **Winter Injury**

Injured areas are most likely to occur southwest and windward facing sides of the plant. There is a distinct line separating the healthy green bottom from the damaged brown top.

- **Macrophoma Leaf Spot**

Most boxwoods are susceptible to infection by the weak fungus, *Macrophoma candollei*. Obvious symptoms are many tiny black raised fruiting bodies found on dying or dead straw-colored leaves



Photo: Illinois Plant Clinic

- **Volutella Blight**

Volutella Blight is often associated with damage/injury to stem and leaf tissues. Infected leaves turn tan, straw-yellow or bronze color in the spring and the blight moves down the stem. Under moist, humid conditions, leaves may develop masses of pink to salmon-colored spores.

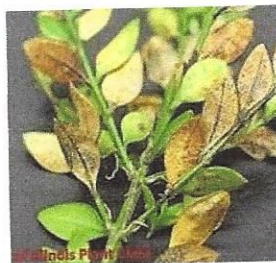


Photo: Illinois Plant Clinic

- **Boxwood Leafminer**

Greenish pouches on leaves turn brownish as the larvae mature. Partially-grown larvae overwinter, so heavily affected leaves develop light brown spots in spring. These spots occur on both the under- and upper-sides of the leaves. Control with chemical or by natural means.



Photo: Illinois Plant Clinic

• **Boxwood Psyllid**

Boxwood psyllids are small (1/16-inch), grayish green insects covered with a white, waxy, filament-like secretion that partially covers the body. Eggs overwinter and hatch into yellowish nymphs that begin feeding when buds begin to open in early spring. The first nymphs suck plant fluids from terminal leaves as leaves unfold and enlarge in spring. Feeding causes leaves to yellow, curl and form a cup. The cup hides and protects the nymphs. Kill Psyllids with Neem Oil or Insecticidal Soap applied weekly, which preserves beneficial insects.

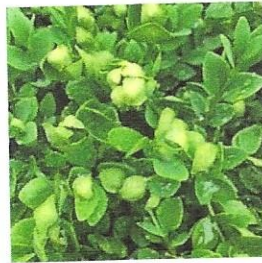


Photo: Illinois Plant Clinic

This article is based on information from the following sources:

- Boxwood blight disease identified in Michigan, MSU Extension Service
- Boxwood Blight Look-alikes, University of Illinois Extension, April 24, 2017, Home, Garden and Yard Pest Newsletter
- 3 Tell-Tale Signs of Boxwood Blight, by Matthew Borden, Fine Gardening, Issue 204

Submitted by Diane Pearson

Revive the Arts & Craft Group?

Recently, I learned of the Garden Club's Arts & Craft tradition. Would you be interested in bringing it back to life? Being surrounded by the beauty, colors, textures, and scents of nature provides a multi-sensory experience that fuels artistic expression. We could meet for a couple of hours at my flower farm once a month. I can be available Monday, Tuesday or Wednesday from 9 am to 1 pm. I have room for 12 participants (if more than 12 are interested we can have two sessions). You would be welcome to bring your own materials or acquire them from the farm when you arrive.

- Plant seeds using soil blocks
- Wearable floral creations for a one of a kind portrait
- Photo transfers onto wood
- Gourd décor (centerpieces)
- Christmas ornaments with dried flowers
- Make a fresh flower bouquet
- Paint your own fresh flower bouquet
- Dry flower wreath
- Sachet

From the list below, what would you be interested in doing?

If you are interested in reviving this group please let me know what day would work for you, how often you would like to meet and any ideas you would like to pursue. _____



m

EARTH DAY CLEAN UP PROJECT

Be the change you wish to see in this world

Duck Lake Pines Park
999 Duck Lake Rd S, Highland
Saturday, April 20, 2024 @3:30 p.m.
Bring gloves & dress for the weather

hosted by
Huron Valley Chamber
Referral Network Group

*Green Fingers are
the extensions of a
verdant heart.*

*A good garden can-
not be made by
someone who has
not developed the
capacity to know
and to love growing
things..*

Russell Page (1906-85)

Proposed Amendment of the Milford Garden Club Bylaws Terri Hardick

Milford Garden Club Members:

I am requesting an amendment to the Article VII Dues, Section III because, as they currently read, the membership dues are prorated to reflect payment of \$2.50 for each month from January through May. The Milford Garden Club does not have meetings in January and February. At the prorated rate, the dues would be a maximum of \$7.50 if a new member joined January through May. I always receive payments from new members for the full \$30/\$40 membership fee. I have been calling and telling them that they paid too much and have to request a new check. This feels petty and requires extra paperwork for the membership chair and the treasurer. I have included the bylaws as they currently read and the proposed amendment below.

Please review the proposed amendment. The Milford Garden will vote on this amendment at the April meeting.

MILFORD GARDEN CLUB BYLAWS

ARTICLE VII – DUES SECTION III

Members joining prior to January 1 shall pay full annual dues. Members joining after January 1 shall pay dues prorated of \$2.50 per month based on the number of meetings remaining prior to May 1.

AMENDMENT TO ARTICLE VII – DUES SECTION III

Members joining prior to January 1 shall pay full annual dues. Members joining January through May shall pay full annual dues for the fiscal year which begins September 1 and ends August 31.

Minutes

General Membership Meeting Milford Garden Club

March 14, 2024

Call to Order: 6:59 PM

Introduction of New Members and Guests: Debbie and Rick Kohler, Hal and Debbie Johnson, Paul and Jean, Sharon Carlsdale (returning member) -- **Susan I need help with names**

Thank You to Greeters Tina Shay and Carol La Haie

Thank You to Hospitality coordinators Mike and Cindy Bauman

Approval of General Membership Meeting Minutes dated November 9, 2023, found in the Newsletter. Accepted without corrections.

President's Report:

- Diane Craft is replacing Dale Benedict as nametags chairperson.
- Daffodil Days on April 19 (attendance + arrangements). Six people are going. Now and if you email Susan, she will coordinate those planning to go. Isabel Davis has a lot growing on her property and will donate the centerpieces that attendees are to bring.
- Holiday party preparations. Susan and Nancy Nordine will coordinate the party. Normally it is held on the 2nd Thursday, but if we want Whisk and Ivy to cater it, they can do it on the 5th of December.
- Anna, our historian, is digitizing important documents. If anyone has something to send her, please do. We need past newsletters, treasury reports, Board minutes, Garden Walks, Plant Sales, etc.
- We have discussed another alternative for Tea Time as people had several concerns about restaurant locations. Linda Sturgeon advised Susan about past events, and we will try this: Each host/hostess will have a choice between their home or a restaurant. If hosting in their home, they will provide tea, plates and napkins and guests will bring sweet and savory items. Guests can also bring their favorite teacups.
- Susan has made jewelry that she wants to sell, with proceeds to go to charity. She will bring pieces and offer them for \$35 per piece and donate the proceeds to the club or to a charity that we support.
- The next President's meeting will be in La Pier. If anyone would like something addressed, please send a message to Susan next week.
- Please sign up to be a greeter. Susan reiterated that being greeted is memorable for new members. A friendly welcome is important.

Vice President of Publicity: Gail Cooper. Nothing to report.

Vice President of Meetings & Programs: Nancy Nordin is planning to go to Hershey PA meeting, and if anyone wants to go, drive with her and share a room, let her know.

- Upcoming speakers at general meetings: tonight, we have Gail Montgomery from Willow Nursery. Next month Emily Duthinh will talk about invasive species. In May we will discuss seed libraries and saving seed. In July we will talk about mushrooms. **Nancy, I don't know other speakers' names**

Treasurer: Nancy Nordin for Diane DeVincent reported that the account balance is \$12,368.22.

Herbal Thyme: Shelley Dale reported that Herbal Time meets once a month. Last week they discussed chamomile. On April 8 at the Milford library the next meeting will be on lemon balm and lemon herbs. They are talking about doing herb-related fieldtrips. The group is a great way to learn and share the effect of herbs and taste food.

Garden Maintenance: Kathy Blackburn announced that garden clean-up will be on May 7th at 9:00.am (rain date May 8th). Look for this information in the newsletter. We need 10 people.

Garden Walk 2024: Karol LaHaie reported on plans for the events on June 21 and 22. We need 4 shifts of hostesses to be stationed at each house. There will be a preview party Wednesday June 19th at 5:00 before the walk, so our hosts and workers can see all the gardens. Nancy Kay will host the party. We raise money for local students who are going into Earth Sciences.

New Business

- We are proposing to amend our Bylaws so that members joining in January and have paid the full amount don't have to pay again when annual dues are charged again a few months later for the next fiscal year. We will vote next month.
- We are launching a new Craft Club conducted by Isabelle Davis. There was one in past years and Isabelle will bring it back. She will send an email to sign up. She showed us the gourd centerpieces few will make for the Division meeting as an example,
- We need to collect donated prizes. Main Street Art speaker photographed the gardens at Mackinac Island - ***I need clarification on this point***

The regular meeting was adjourned at 7:42

Guest Speaker: Gail Montgomery, Master Gardener at Willow Nursery

This session focused on container gardening. Gail got more involved in container gardening because she had Dog that liked to dig. One year she had 41 pots. She has 12 stationery pots that never move. Last year she had 28 pots. She likes to cluster them.

The first step: pick a pot. It can be a small or large vessel, hanging basket or a pot on a stand.

Prepare the pot. It needs to have proper drainage. If it doesn't, you'll need to drill holes or use gravel or a broken terracotta pot in the bottom. If you use grass hanging baskets, soak them in water and line with plastic. Cut a circle in the plastic for drainage. Use perennials in the pots. Gail has used feverfew, sage, euphoria, tansy, Autumn Joy Sedum, buttercup as a yellow spreader. Take what you would have in a garden and put it in pots.

Always fill a pot where it will live to save moving it. Gail uses a small rolling barrel for bringing the soil and mulch to the plant's location.

Use potting soil with some peat moss. You don't want to use compost or dirt.

Always put plants together that have the same watering needs – those that are draught tolerant together but separate from those needing water. Also consider the sun needs. For example, Bacopa needs full sun, but only morning sun. If a full sun plant is in the shade, it won't die but it won't bloom.

Examples of drought tolerant plants: dusty miller, zinnias, state fair zinnias, vinca flowers (look like impatiens.)

For hot sun places use Soil Moist and follow the directions. Look at the sun needs when planting, too. For example, full sun plants include lantana, cosmos, Persian Shield, potato vine. Begonias like partial shade. A good trailer for hot sun is the Livingstone daisy or Mezoo. Clip it at the end of the season and root it.

Purple Slavia is a great hummingbird attracter.

Tips:

- In the winter you can bring hibiscus inside a sunny room. She may go dormant and look dead but will come back.
- If you put Christmas greens in pots, they last until after March.
- Home Depot sells bucket lids with cushions to sit on. You can carry tools in the bucket and sit on it.
- A kneeling bench turned upside down helps you get up using the legs as handles A short shovel can also be used to help you stand. Stretching every morning for 15 minutes helps with gardening muscles.
- Vary the height of your pots for variety. Gail is trying to stay under 30 pots.
- Use slow-release fertilizer, such as Osmocote plus miracle grow.

Visit Willow Greenhouse at 6 mile and Curtis in Northville. You'll see chickens. They sleep with Sushi the cat in a bed in the Greenhouse.

Garden Club Events in Our District

(A good way to show our support of other Garden Clubs)

May 11, Saturday, Waterford Garden Club Spring Plant Sale from 9 am - 2pm at the Waterford Senior Center, 3621 Pontiac Lake Rd., Waterford.

May 16-19, National Meeting of the WNF& GA

May 18, Saturday, Perennial Plant Exchange, Warren Garden Club, 10 am - Noon, RAIN OR SHINE, First United Methodist Church, 5005 Chicago Road, Warren, 48092 (between Ryan and Mound Roads)

May 18, Saturday, Perennial Plant Exchange, Troy Garden Club from 10 am – noon, at City of Troy Aquatic Center parking lot.

May 22, Wednesday, Spring Council Meeting, at the Saginaw Art Museum, hosted by Saginaw Garden Club.

May 30, Thursday, Mrs. Tebben's Tea hosted by **Lapeer Wildflowers** at The Huntsman Hunt Club, 3166 Havens Road, Dryden, MI. Tickets available by phone beginning at 9:00 am on Monday, April 1, 2024, Call Cecelia Montgomery at (810) 664-6733.

June 1, Saturday, Milford Garden Club Plant Sale will be held at the United Methodist Church 1200 Atlantic Street, Milford, from 10 a.m. – noon.

June 1, Saturday, Clarkston Garden Club Perennial Plant Exchange at 8:30 a.m. at the parking lot in downtown Clarkston.

June 19, Wednesday, Franklin Garden Walk and Artisan Market, 10am - 4pm & 6pm - 9pm. Artisan Market: 9am - 5pm. Location: Franklin Community Park & Gazebo. Tickets: \$12-Adv./\$15-6/19

June 20, Thursday Rochester Garden Walk begins at Rochester Hills Museum at Van Hoosen Farm. Includes a native plant sale, "flea-tique" resale, talk on pollinators, and tours of lovely area gardens. From 10 am to 5 pm. Visit www.RochesterGardenClub.com for details.

June 21 & 22, Friday and Saturday, Milford Garden Walk. June 21 from 4-8 pm and June 22 from 10 am – 4 pm. See the website for details. www.themilfordgardenclub.com.

June 21 & 22, Friday and Saturday, Gorsse Pointe Garden Center Garden Tour. 10-4 pm both days (Rain or Shine) Tickets \$15 pre tour, \$20 tour days See website for details and where to purchase tickets at WWW.gpgardencenter.org

June 25, Tuesday, "Flowers Are Forever" Garden Walk and Plant Sale hosted by **Trailwood Garden Club**, Plymouth Area, from 11am – 7 pm. Tickets \$12 in advance and \$15 day of walk. TrailwoodGardenClub.com

Georgia Randinitis, President, 734-459-7146

July 10, Wednesday, 49th Troy Garden Walk "Garden Stories"; 9:30 AM – 3:00 PM and 5:00 PM – 8:30 PM Rain or Shine. Location: Troy – View 6 private gardens + bonus venue. Garden Walk Activities at Troy Historic Village: Midsummer Arts & Crafts Boutique and Plant Sale from 9 AM – 6 PM. FREE Admission on July 10th

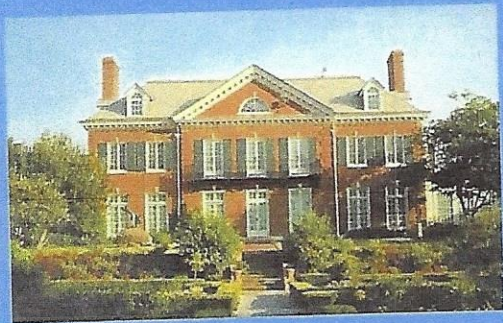
July 10, Wednesday, 30th Annual Garden Walk, Country Garden Club of Northville. From 9 am - 4 pm Tickets are \$12 in advance and \$15 the day of the event. Tickets are available through Eventbrite one month prior at <http://cgcnv.org>

July 17, Wednesday, 18th Annual Clarkston Garden Walk starts 11 am - 7 pm Tickets are \$15, available online at <https://clarkstongardenclub.org/> beginning May 1. Six gorgeous gardens with water feature, unique plantings, and garden art. The tour starts at the Clarkston Independence District Library.

Michigan Division Spring Council Meeting – REGISTRATION FORM

Wednesday, May 22, 2024, at the Saginaw Art Museum
 1126 North Michigan Ave., Saginaw, MI 48602

Hosted by the Saginaw Branch, WNF&GA



Saginaw Art Museum

*Michigan 4-H Foundation:
 Preparing Youth for
 Meaningful
 and Successful Lives*



SPEAKER:
 Abbey Miller, Director
 Michigan 4-H Foundation



Meeting Schedule

9:00 – 9:50 a.m.: Arrival – Check in and drawing ticket sales
 9:50 a.m.: Welcome and Invocation
 10 a.m.: Brunch
 10:30 a.m.: MI DIV Business Meeting – 11:45 a.m.: Break
 12 noon: Abbey Miller, Michigan 4-H, speaker

Be sure to enjoy the lovely gardens onsite.

Tickets will be available for purchase for our Spring drawing featuring items from greenhouses, florists, and landscaping businesses in Saginaw County.
 1 ticket for \$5.00; 5 tickets for \$20

Make check payable to: Saginaw Branch WNF&GA

Please mail with your completed form to:
 Peggy Pavlik
 21611 Ederer Rd.
 Merrill, MI 48637

Registration questions:

piecemaker52@hotmail.com

Registration deadline April 30

PLEASE NOTE: The registrar will send a registration confirmation to your email address. No email? Enclose a self-addressed & STAMPED envelope when you send your registration. **PLEASE PRINT CLEARLY.**

Name: _____ Member ___ or Guest ___ Phone _____

Street Address: _____ City _____ State _____ Zip _____

Email address (print clearly to assure confirmation receipt): _____

Branch Name (& current branch office, if applicable): _____

Fee Per Person (Breakfast and Speaker): \$ 40.00

Optional Donation (tax-deductible): \$ _____

Total Payment Enclosed: \$ _____

Guests are welcome and should send their own separate registrations and checks.

Your payment is tax deductible less the \$ 25.00 value of your meal.

SUGGESTION:

Make a copy of your completed form before mailing it to the registrar.

Rain garden resources

Local native plant nurseries & sales

Local nurseries and organizations that specialize in Michigan native plants

Feral Flora
Green Things Farm Collective
3825 Nixon Rd
Ann Arbor, MI 48105
734-224-2080
matt@feral-flora.com
feral-flora.com

Hickory Nut Homestead
5310 Hickory Nut Lane
Dexter, MI 48130
734-358-1142
info@hickorynuthomestead.com
hickorynuthomestead.com

Matthaei Botanical Gardens
Wildflowers & Native Plant Sale
Late Summer/Early Fall
1800 N. Dixboro Rd
Ann Arbor, MI 48105
mbgna.umich.edu

Michiganense Natives
21734 Taft Rd
Northville, MI 48167
michnatives@yahoo.com
michiganensenatives.com

Michigan Wildflower Farm
11770 Cutler Rd
Portland, MI 48875
517-647-6010
michiganwildflowerfarm@gmail.com
michiganwildflowerfarm.com

Native Restoration Solutions
19185 Bush Rd
Chelsea, MI 48118
734-589-9704
pdanley1@gmail.com
nativerestorationsolutions.com

New Leaf Natives
9587 Saline Waterworks Rd
Manchester, MI 48158
734-330-7175
info@newleafnatives.com
newleafnatives.com

Sideoats Farm & Native Nursery
11571 Serenity Lane
Pinckney, MI 48169
206-276-8364
sideoatsfarm@gmail.com
sideoatsfarm.com

Washtenaw County Conservation
District Native Plant Expo &
Marketplace
Spring
Washtenaw Farm Council Grounds
5055 Ann Arbor-Saline Rd
Saline, MI 48103
washtenawcd.org

Wild Cherry Farm
17120 Boyce Rd
Stockbridge, MI 49285
734-498-2652
nativeplants@wildcherryfarm.com
wildcherryfarm.com

Wildtype Native Plant Nursery
900 N. Every Rd
Mason, MI 48854
517-244-1140
info@wildtypeplants.com
wildtypeplants.com

Windy Rock Farm
6750 Sharon Hollow Rd
Manchester, MI 48158
734-358-8260
windyrocknursery@outlook.com

Ypsilanti Native Plant Nursery
Ypsilanti, MI
info@ypsilantinativeplantnursery.com
ypsilantinativeplantnursery.com

**You can also ask
for native plants at
your local nursery!**

Additional resources:

Wildflower Association of
Michigan
Encouraging the preservation
and restoration of Michigan's
native plants and native plant
communities. Hosts an annual
conference in March.
wildflowersmich.org

Huron River Watershed Council
Provides resources for watershed-
friendly landscaping as part of their
mission to protect and restore the
Huron River System.
[hrwc.org/take-action/at-home/
lawn-garden/](http://hrwc.org/take-action/at-home/lawn-garden/)

Washtenaw County Water
Resources
The Rain Garden Program website
hosts links for native plant
producers throughout Michigan.
[washtenaw.org/3097/Find-Native-
Plants](http://washtenaw.org/3097/Find-Native-Plants)

