



2023-2024 Executive Board

President: Susan Absher

VP Publicity: Gail Cooper

VP Programs: Nancy Nordin

Treasurer: Diane DeVincent

Secretary: Lee Doyle

Past President: Linda Smith

Website:

www.themilfordgardenclub.org

Email:

mifordgardenclub@outlook.com

December 2023 Newsletter



President's Report

Susan Absher

The Board is pleased to announce that Jennifer Wohletz, from Main Street Art, will be our guest speaker for the Division Council Meeting on September 25, 2024. Jennifer will be speaking about *The Gardens of Mackinaw Island*, a book written by Jack Barnwell and Sue Allen. Jennifer did the photography for the publication. She will not only speak about the gardens that are visible to visitors who walk the main streets of the Island, but also the gardens that are hidden in its interior. She may have success in getting one of the others who worked on this book to join her. We are also expecting auto-graphed copies of this book and another on lilacs to be available to purchase.

I know many of you who plan on attending this event and have not yet signed up to volunteer for an activity. It's hard to commit to anything that far in advance. Just remember, when you sign up you have good intentions of following through. None of us can predict if we can definitely perform the task we sign up for. We just want an idea.

These are the spots that need to be filled:

Set-up: Arrange centerpieces, brochures, and anything else that needs to be placed on tables in the reception area and main dining room.

Business Promotion Coordinator: Contact the Milford Chamber of Commerce to get a business directory that can be placed at each table setting to encourage guests to explore The Village of Milford and surrounding areas.

Door Prizes Coordinator: It is the Board's intent for members, in general, to make an effort to get a business person to donate a prize for the drawing that will be held at the end of the meeting. We are hoping if you frequent a store or restaurant, you would feel comfortable asking for a donation. We realize this is out of the "comfort zone" for some. That is why we need members to ask businesses that have not been approached for donations.

Name Tag Assembly: The tags will already be printed and separated. The job will require the member to go to Allegra to pick up printing, go to an office supply store and purchase plastic pin on name tag holders and double check to be sure all who registered have a name tag.

Centerpieces: Responsible for designing and creating autumn themed arrangements for each table in the dining area along with 2 or 3 for additional tables. Gourds and pumpkins will be grown by other members or purchased if need be. Flowers and greenery will either be donated by members or purchased.

Hoping everyone has a happy and healthy holiday season.



Snowflakes, Glitter & Song

When: Thursday Dec 14 @ 6:30 pm for social 1/2 hour, 7:00 pm Dinner

Where: Milford Senior Center
1050 Atlantic, Milford, MI

Program: Dinner and ??

Milford Garden Club Established 1948

A member of the Michigan Division Woman's National Farm and Garden Association

Herbal Thyme

Happy Holidays! It's December and soon will be our meeting for Herbal Thyme. The herb for study this month is ROSE-MARY, the herb of remembrance. The meeting will be Monday, December 11 at 1:00pm at the Milford Public Library. If you have information to share about ROSE-



MARY feel free to bring it to the meeting. Also, food is allowed in the community room so if you have a favorite recipe or food item with rosemary, bring that to share. The meeting is open to all. Reminder: Herbal Thyme will be on the same meeting months as regular Garden

Club meetings, so we will not meet in January or February. Information will be shared closer to March when we meet again. Have a wonderful holiday season!

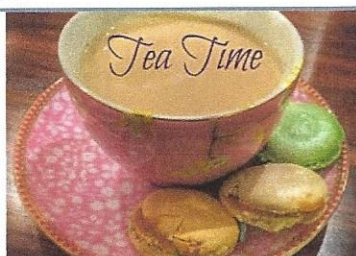
Herbally Yours,

Shelley Dale

Text or call: _____

Tea Time

There is no information about the November Tea Time. Please Call **Mary McFarland** at 248-520-7186.



The Great thing is not to be timid in your gardening, whether it's colors, shapes, juxtapositions, or the contents themselves. Splash around and enjoy yourself.

Christopher Lloyd (1921-2006)

Greeters

The friendly people greeting us at the December party will be **Terri & Jerry Hardick**. Greeters need to be at the Senior Center at 6:30 to greet members and guests as they arrive.



From the Editor



Thank you everyone who got me regular content and interesting contributions in a timely manner. Please send anything other members would find interesting. Your input makes these pages more relevant to

Jackie Swenson all MGC members. Please

send your contributions to:

jacquelyn.swenson@gmail.com

I wish every one a wonderful holiday season



Making your real Christmas tree last through the holidays

Fresh tree, fresh cut and fresh water are essential in keeping your real Christmas tree fresh and hydrated throughout the holiday season. Nothing looks, feels or smells like the holidays quite like having a real Christmas tree in the house. However, surveys indicate that the potential mess of pine needles dropping deters would-be tree buyers. Michigan State University Extension offers three simple steps to consumers to help keep your trees needles on the tree and minimize post-holiday cleanups.

#1: Fresh tree If you are not able to get your tree in the house right away, be sure to store the tree in a cool, protected space such as a garage with the cut end submerged in a bucket of water. If you buy a tree from a lot you can check for freshness by doing the pull test. Gently pull on a shoot with your thumb and fingers: if the tree is fresh you should not have any needles come off in your hand.

#2: Fresh Cut Cut 1/2 inch off the base of the tree right before you put it in the tree stand to help the tree resume water uptake.

#3: Fresh water A fresh tree can use up to 1 quart of water per day for each inch of diameter on the cut end. A typical 7 foot tall tree may have a 3 inch trunk diameter, so will need up to 3 quarts of water per day.

Be sure to replace the water that the tree has used each day and don't allow the stand or cut tree end to dry out. You do not need to add any extra supplements to the water. Do not add sugar, aspirin, bleach or floral preservatives. Research has shown plain tap water is all that is needed to keep your tree fresh.

Adapted from a MSU extension Article

Around Town and Beyond

December 1 & 2 Black Sheep Weavers Holiday Fiber Arts Sale at Bogie Lake Greenhouse, 1525 Bogie Lake Rd, White Lake



December 2 Visit with Santa at Deneweths Garden Center, 13790 W. Highland Rd, Hartland, MI



HOLIDAY MARKET

@ GOLDNER WALSH

DECEMBER 2ND & 3
10 AM - 5:00 PM

FREE ADMISSION

LOCAL BUSINESSES

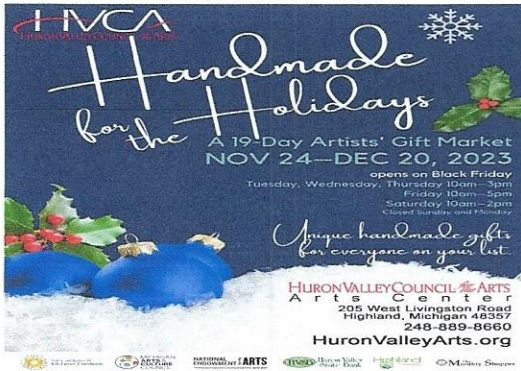
HOME DECOR & ART

FUN FOR THE FAMILY!



Wreath Building
Workshop Dec 2

December 5
Highland Twp.
Kris Kringle Market/Tree Lighting
@ HVCA



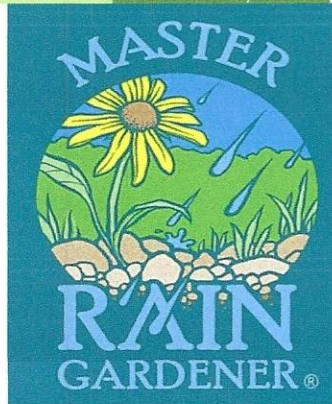
MICHIGAN STATE UNIVERSITY Extension

Foundations of GARDENING

Foundations of Gardening is a 10-week online certificate course that includes weekly webinars delivered by MSU Extension horticulture experts and learning modules with readings, videos and interactive activities.

Winter session 2024
February 1-April 11
Thursday evenings
6-8:30 p.m.
Cost: \$350
Accepting scholarship applications
November 1-30
Registration begins
December 7, 2023

January 25 - February 22, 2024
Master Rain Garden Training Program. For information contact Jacy Garrison @ rainsmart@therouge.org



Dates to Remember

2023

December 5, Last day to reserve your spot for the Holiday Party

December 5, 11 am Christmas at Meadow Brook Hall

December 14, Snowflakes, Glitter and Song

December 18, Board Meeting

December 27 January Newsletter Deadline

2024

March 14, General Membership Meeting

March 18, Board Meeting

April 11, General Membership Meeting

April 15, Board Meeting

April 17, 2024 Daffodil Luncheon

May 9, General Membership Meeting

May 18 & 19, 2024 WNFGA National Meeting, Hershey, PA

May 20, Board Meeting

June 1, Annual Plant Sale

June 13, General Membership Meeting

June 21 & 22, Annual Garden Walk

September 25, Fall Division Council Meeting



@ Tollgate Farm



2023 - 2024 Committees

Community Outreach: Sue Grifor

Devine Raffle: Sheila Myers

Email Distribution: Lisa Willard

Facebook: Lisa Willard

Field Trip Coordinator: Lisa Hill

Linda Becker

Garden Walk: Diane DeVincent & Karol LaHaie

Garden Maintenance: Kathy Blackburn

Janet Kinney

Greeter: Barb Brennan

Historian: Anna VanHyfte

Holiday Party: Carol Hilf

Don Caley

Hospitality Coordinator: Mike & Cindy Bauman

Membership: Terri Hardick

Mentoring: Diane Pearson

Name Tags: Marion & Dale Benedict

Newsletter: Jackie Swenson

Plant Sale: Lisa Hill

Scholarship: Linda Sturgeon

Sunshine: Kathy Barker

Tea Time Group: Mary McFarland

Website: Sue Tompkins

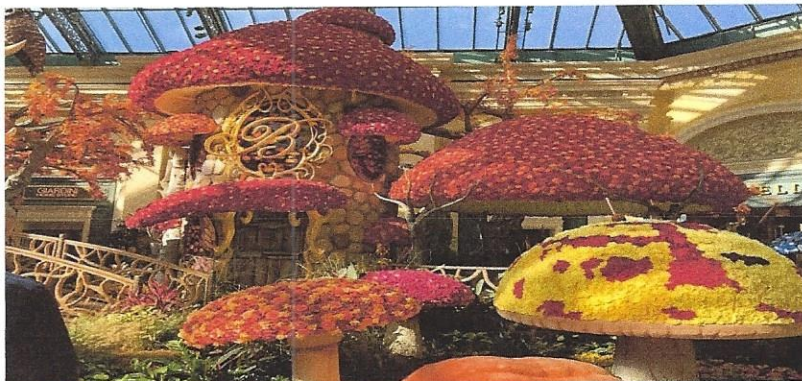
Yearbook: Brook Qualman

WNF&GA (National): www.wnfga.org

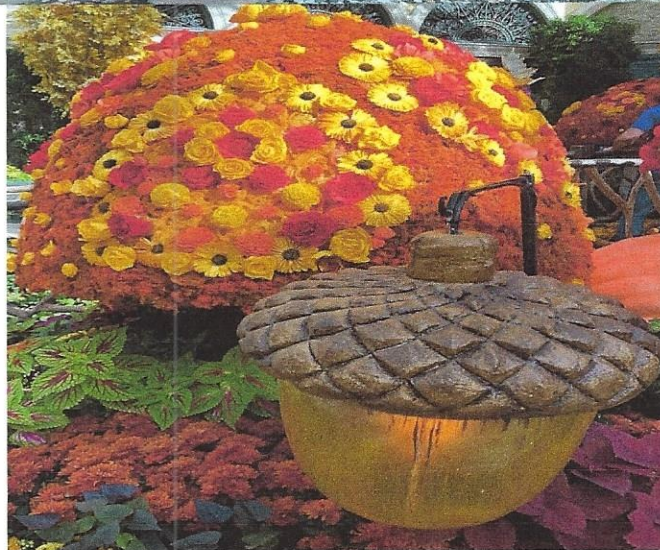
WF&GA (Michigan Division): www.michdivwhfga.org

In The Garden

If you have seen anything in your garden or when wandering that you think would delight other gardeners please send pictures and description to me at: Jacquelyn.swenson@gmail.com



Lisa Hill is sharing these wonderful photos from her recent trip to Las Vegas. She says that the Bellagio transformed their courtyard garden into a beautiful life size fairy garden. Thanks for sharing Lisa.



Milford Garden Club

General Membership Meeting Minutes

November 9, 2023

President Absher called the meeting to order at 7:01 p.m.

New members were greeted, including:

Sue Woelfel

Julie Race

Janie Kriegerman

The greeters and hospitality coordinators were thanked.

The meeting minutes dated October 12, 2023, were approved as submitted.

The President's Report:

- The club has a new Epson projector, costing \$481 with our non-profit discount.
- Thank you to Lisa Hill for initiating the "Sign-up Genius method of signing up to support the Division Meeting next year.
- If jobs to be signed up for need explanation, ask.
- 2 people will be needed to insert printed name tags into holders.
- It was suggested that we include a listing of Milford businesses to put on tables at the place settings to help guest enjoy their visit to our town. Alternatively, the Chamber of Commerce may already print a directory that we could provide.
- Volunteers will be needed to do set up.
- Volunteers will be needed to make centerpieces from gourds and pumpkins.
- Isabel Davis is developing a "pick your own" annual farm. Hopefully she will help us with the centerpieces.

V.P. of Publicity:

Gail Cooper is finishing an article for the Farm and Garden newsletter.

Treasurer's Report:

Diane De Vincent was absent, but our fund balance is \$13,434.52.

Garden Maintenance: A great turn out on Tuesday October 24th at Arthur Park and the Senior Center. They did fall cleanup and planted daffodil bulbs.

Field Trips: Lisa Hill reported that 18 people are signed up for the next field trip to Meadowbrook Hall on December 5th. People wanting to carpool should meet at the Senior Center by 9:30 and the tour begins at 11:00. A lunch will follow at a location to be determined.

Programs: Nancy Nordine announced the speaker for the District Meeting will be Jennifer Wohletz from Main Street Art. She is a photographer and contributed to the book *The Gardens of Mackinac Island* written by Jack Barnwell and Sue Allen. Main Street Art also will be a vendor at the meeting.

Hospitality coordinators Carol Hilf and Dan Caley reported that the holiday party on December 14 will be a catered sit-down dinner held at the Senior Center. They collected money from those signing up to attend. Anyone who missed the meeting and wants to attend the holiday party should contact them about payment. The theme will be "Snowflakes, Glitter and Song". People can get into the building at 3:00 to set up. Hospitality volunteers will provide appetizers and desserts. If you wish, you can bring a bottle of wine for your table.

Newsletter: Jackie Swenson said that since we are considering publishing a newsletter for 12 months instead of 9, she would welcome help with content, including articles, recipes, and other ideas.

The business meeting was adjourned at 7:24

Common Trees and Shrubs

Guest Speaker: Mark Brooks from Save a Tree.

Mr. Brooks is an ISA certified Arborist and Tree Risk Assessor. He has an associate degree in landscape horticulture. He diagnoses diseases in shrubs and trees. In the past he was a Forester for New York City parks and a Risk Assessor for the Bronx. The following are the points that he shared.

Planting Time: Spring and fall for deciduous trees.

Evergreens, Holly, and Arborvitae -only plant in early spring.

It is ok to see root flare on the surface. Don't bury the roots.

When you transplant a tree or plant a new one, there is transplant shock. This mode lasts one year per inch of trunk as the tree establishes. You'll have stunted growth before it gets back to normal.

Don't fertilize plants if not stressed.

If foliage needs it, lower nitrogen. For root growth use phosphorous, potassium and organic matter.

When planting don't use burlap or a cage unless you need to stabilize the tree. If you must use it, cut it back several inches from the surface. Twine along the base will dig into the trunk and cut off water flow. The top 8-12 inches of soil are the most important for the roots.

Space trees appropriately and remember they grow. Norway Spruces for example should be at least 5-6 feet apart. Arborvitae can be closer to create a screen.

Consider the wind patterns and sun – for example a flowering Dogwood needs protection from wind and does not need full sun. Hydrangea don't like hotspots. Yews and Hydrangea can't be planted together. Hot spots can be created from the reflection of light from a concrete swimming pool, air conditioning or fryer vents, which pull water.

Consider drainage. Standing water will drown an arborvitae and it will get root rot.

Pruning: Stresses a tree as it suffers energy production loss. Branches fall naturally. Don't remove more than 1/3 of a tree's foliage on any one branch. The tree needs a good canopy. Don't thin it. When shearing boxwoods and ewes, consider that the bottom branches need light. Don't trim at 90 degrees, but rather an angle. Leave 1/4 inch of new growth.

Prune to remove crossing or rubbing branches, to reduce weight on heavy, drooping branches, to protect a structure or house, clear walkways, to make room for a mower, or improve your view.

Don't prune a branch collar that flares a bit. Leave a little nub or more so it can protect itself from decay. When a tree has exposed its heartwood, decay can set in. It can take up to 4 years to heal the wound from pruning if a branch is larger. Pruning sealant is not recommended as it holds in moisture and creates an environment for decay.

Moisture: don't create "Mulch Volcanoes" – a dome of mulch around the base of your tree. It allows decay to set in. Leave 2 inches from the trunk before mulching. Trunks don't want moisture. Most root systems are 1 1/2 times the height of a tree. Maples though are shallowly rooted.

Check the dampness of soil before watering. Yews and boxwoods don't want too much water, for example. Avoid overhead irrigation as it diseases trees. It's better to use a soaker hose.

Herbicides: Don't use lake or pond water that may have bacteria or the wrong Ph. It also may be treated for seaweed with herbicide.

Avoid herbicides such as Imazapyr or Imazapic. Roundup 365, Roundup Extended Control or Ortho Ground Clear will kill trees and shrubs.

Diseases: Beech leaf disease is new this year. A bug gets into the leaf tissue and eats the chlorophyll in the leaf. Maple tar spots came from our wet spring. They aren't life threatening and hard to keep from spreading.

More of Lisa's wonderful pictures.

